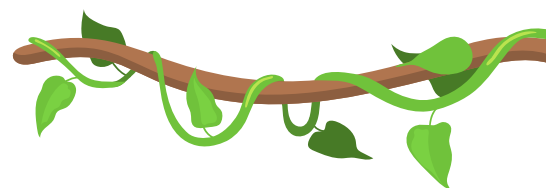


How to measure your door?

Measuring your door is very simple - just grab a tape measure!

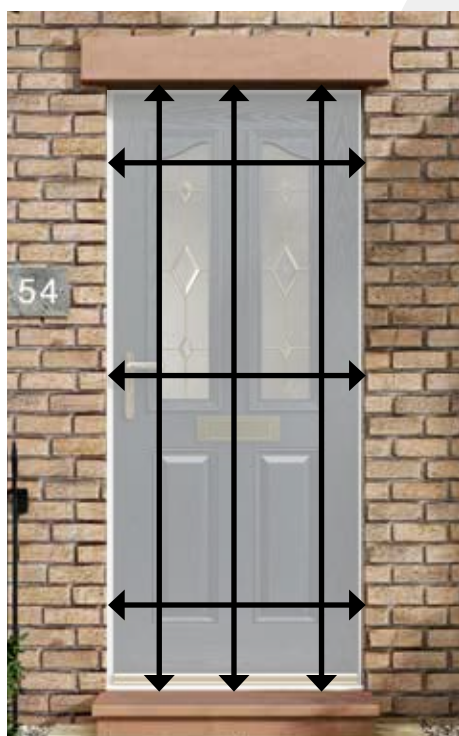


STEP 1: Door Width

Take three measurements in millimetres (mm) horizontally as shown.

Measure the top, middle and bottom from brick to brick - deduct 10mm from the smallest of the three measurements for your width.

The standard UK widths of doors are: 24 inches/610 mm, 27 inches/686 mm, 30 inches/762 mm, 33 inches/838 mm.



STEP 2: Door Height

Take three measurements in millimetres (mm) vertically as shown.

Measure the left, middle and right from brick to brick - deduct 10mm from the smallest of the three measurements for your height.

The standard UK height of doors is most commonly 6'6"/1981mm but some may also be 2040mm.



STEP 3: Design Your New Door!

If your door has a cill included then this will need to be included within your height measurement. Cills are usually a standard size of 30mm.

You should now have the correct measurements for your door. Visit www.gorilladoors.co.uk to start designing your exciting new front door.

If you do not feel confident enough to install your new composite door, we do offer an installation service to most parts of the UK. Please contact us to find out if we cover your area.

